

FACILITY SUMMARIES



Central Library in Downtown Sacramento



Sacramento Room in the historic Carnegie portion of the library

BRANCH SUMMARY

The Central Library serves as a systemwide resource for all of the system’s branches, including technical and administrative support services. It also serves as a neighborhood library for the residents of the downtown area. It was originally constructed as a Carnegie library in 1918, and underwent a major renovation and addition in 1991.

COMMUNITY

The downtown service area for the Central Library has experienced a renaissance, with many new residential projects in the planning or construction phases. The library also serves as a destination for visitors from throughout the region, particularly to the Sacramento Room. The library also serves downtown businesses and government employees. The State Library, located just a few blocks away from the Central Library, serves more in-depth governmental research needs.

SITE

The site is centrally located in downtown Sacramento, near both Sacramento City and County administration buildings, and just blocks from the State Capitol. It is near several highway access points, including access to I-5, I-80, and Highway 50. It is also well-served by several Regional Transit bus lines as well as Light Rail. Parking is available in the adjacent U.S. Bank parking structure. This parking is not free to library users, and it is the only library in the system where parking is not free. There is a drive-through book drop that can be accessed through an alleyway. The site itself is constrained with no room for further expansion.

BUILDING

While most of the building’s systems are circa 1991, there have been issues with some systems that are experiencing frequent malfunctioning.

Service	Current
Service Area Population - System	1,294,312 pop.
Service Area Population - Neighborhood	25,367 pop.
Year Facility Built	1918
Year Facility Renovated/Expanded	1991
Collection	288,691 volumes
Reader Seats	331 seats
Public Computers	64 computers
Community Rooms	N/A
Group Study Seats	0 seats
Building Size	160,000 sf

FACILITY SUMMARIES

The lower level of the building also has some ventilation issues due to the location of the air intake vents (near traffic and restaurants). There are also some areas with uneven lighting at the lower level; the upper levels are well-lit both electrically and with daylighting. The HVAC system has some areas of uneven heating and cooling, especially on the upper floor. Building exterior and interior finishes are generally wearing well. The air-conditioning system is in need of replacement, as are the elevator systems.

The building has some security issues, most of which are solved through the use of a building security team. There is, however, a lack of surveillance of some areas of the first floor exterior areas resulting in vandalism. Lockers at the entrance have also posed a problem in the past.

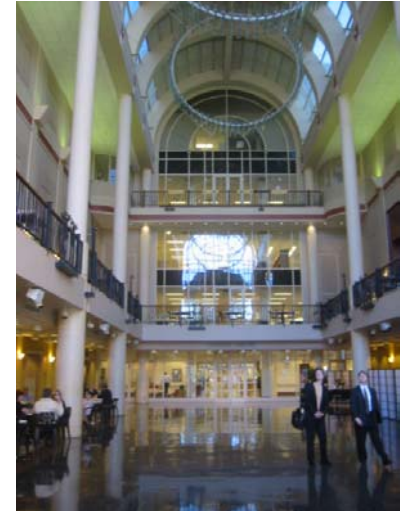
From a user standpoint, ADA issues are generally minor, although an additional ramp at the I Street entrance is a frequent customer request, and the spacing between the fiction collections and the computers on the third floor limit the ability for some people to access the fiction collection. Also, the arrangement of the circulation desk does not promote self-service and is difficult to fully staff. A rearrangement of the first floor to encourage self-service, as well as the upper floors where large service desks are often unstaffed, would result in better use of space and more efficient operations. The structure of the building, especially the 1991 addition, was designed for flexibility and adaptability over time, and this should be taken advantage of to incorporate new service visions and make the library more user friendly and attractive to both casual and research users.

LIBRARY SERVICES

The system-wide services currently housed at the Central Library include non-public services such as library administration, systemwide delivery services for materials, technical materials processing and cataloging. Systemwide library public services include the systemwide telephone reference (TELIS), homebound books-by-mail service, Schwab-Rosenhouse College Resource Center, the Sacramento Room, which provides archives and special collections on both Sacramento and California history, and the Tsakopoulos Library Galleria.

The Central Library also houses a more extensive collection than the branches, both as a central repository as well as resource for other branches.

While most of these services function well consolidated in this centralized location, there may be advantages to relocating the delivery/materials distribution services to a location more geographically central within the county. This relocation would also free up valuable ground floor space at the Central Library for expanded public services.



Tsakopoulos Galleria



Central Library's children's area

FACILITY RECOMMENDATIONS



Central Library in Downtown Sacramento

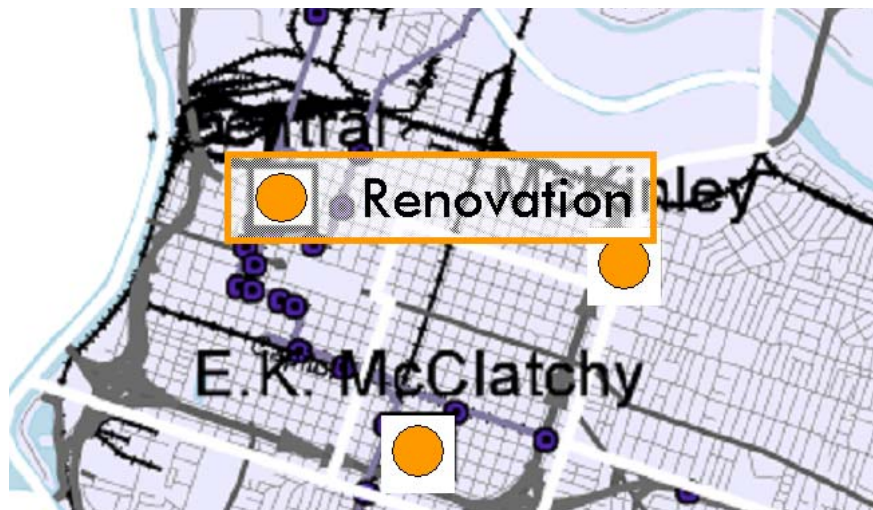
RECOMMENDATIONS

The Central Library is both a vital systemwide resource and destination as well as local neighborhood resource. The facility was designed for flexibility and adaptability over time, and this should be taken advantage of to incorporate new service visions. These include the recommendation of increased neighborhood services.

The potential relocation of the delivery/materials distribution services to a location more geographically central within the county should be further explored. This relocation would allow the first floor to be completely reconfigured to increase public library service in this prime location on the ground floor. A reconfiguration of this space should also incorporate user-friendly elements to make this resource an attractive venue for downtown workers and residents to use on a daily basis, such as comfortable seating, and new and popular materials with bookstore-type displays.

A renovation should include re-configuration of the upper floors as well, to reduce the size and number of service desks and increase public service elements --seating, computers, etc.--in these areas.

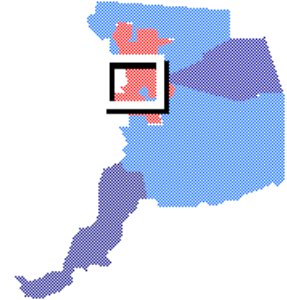
- Renovate Central Library to enhance its ability to serve as both a neighborhood and citywide destination
- Consider relocation of delivery/materials distribution services from Central Library to an alternate location



	2005	2015	2025
Population	25,367	31,501	36,937
Central - neighborhood	<input type="checkbox"/> 15,000	<input checked="" type="checkbox"/> 20,000	20,000
Centralized Serv.	<input type="checkbox"/> 145,000	<input checked="" type="checkbox"/> 140,000	140,000
Sq. Ft. Deficit	-2,317	-4,250	-1,532

FACILITY RECOMMENDATIONS

Renovation - Central	2006 Dollars
Construction Hard Costs	TBD
Technology, Furniture, and Public Art	TBD
Soft Costs	TBD
Unescalated Project Budget	TBD
<i>Does not include land, cost escalation, or initial purchase of library materials</i>	

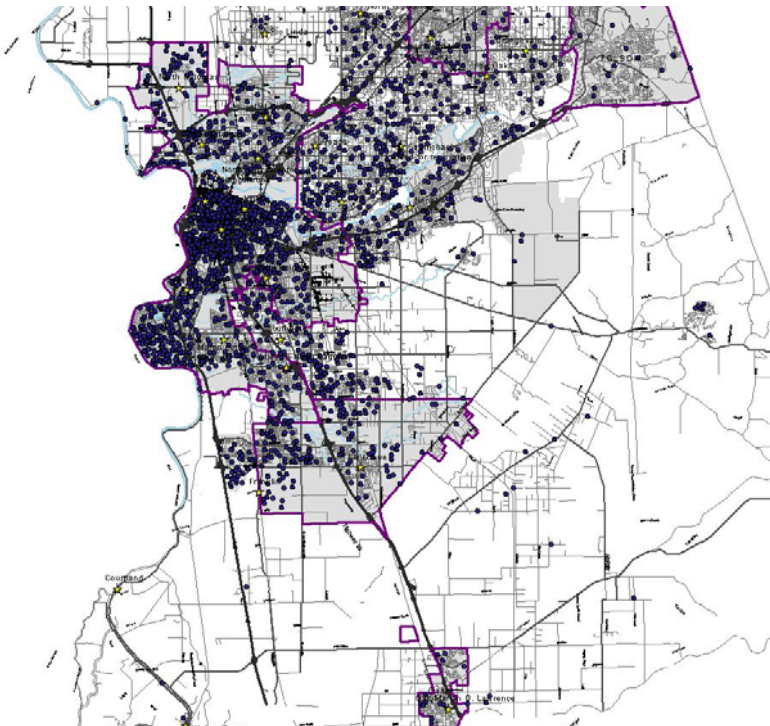


COST MODEL

Due to its size and complexity, the costs to renovate the Central Library cannot be determined without further study of the scope of renovation, including the number of floors affected and level of renovation performed. Renovation costs can range from \$100-400/sf construction costs depending on the type of changes being made.

OPPORTUNITIES AND FUNDING

The Central Library is located in the Downtown Redevelopment Area, and may be eligible for Tax Increment Financing funds.



NEXT STEPS

- Development of possible concepts and service-reconfigurations for the Central Library
- Funding Identification